

Mounting instruction

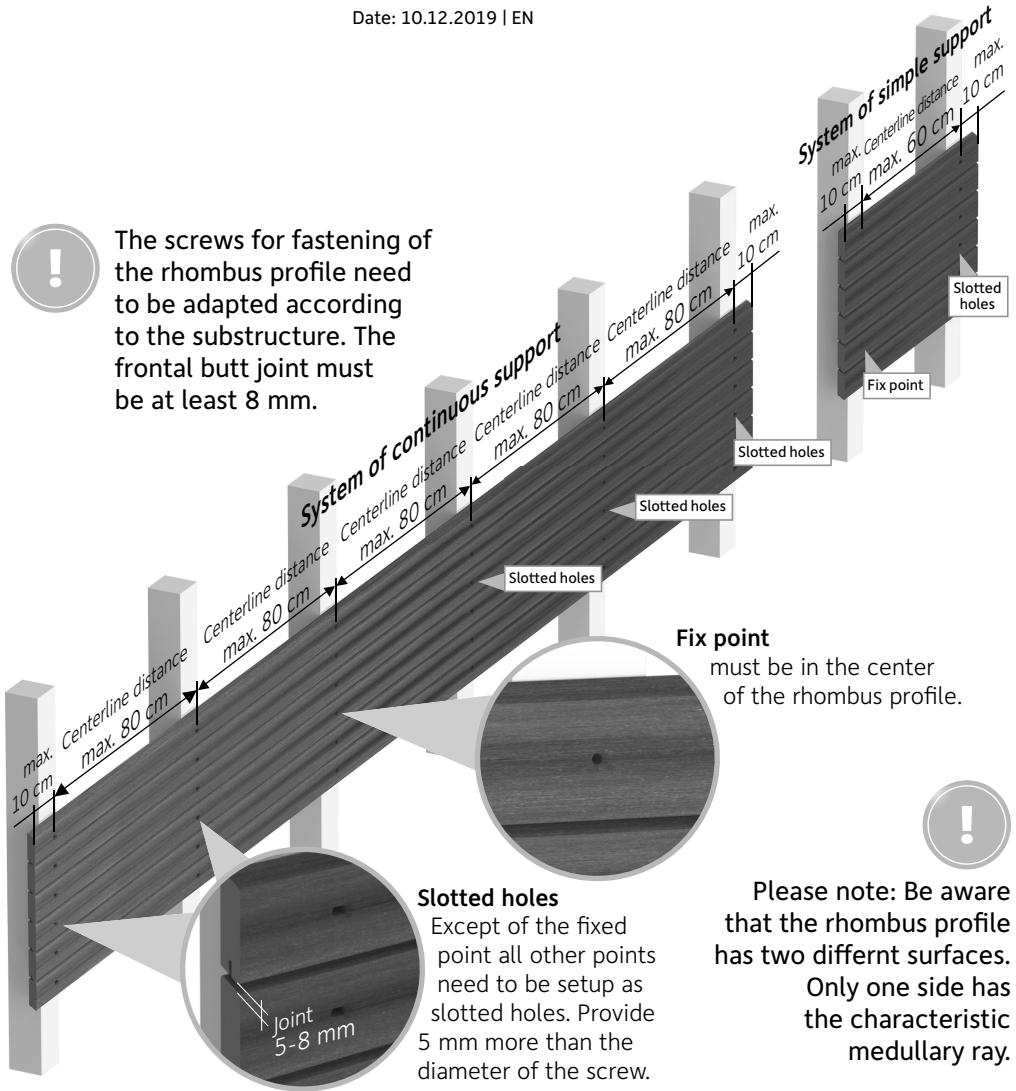
Rhombus profile

20.5 x 81 mm

Date: 10.12.2019 | EN



The screws for fastening of the rhombus profile need to be adapted according to the substructure. The frontal butt joint must be at least 8 mm.



Slotted holes

Except of the fixed point all other points need to be setup as slotted holes. Provide 5 mm more than the diameter of the screw.

Fix point

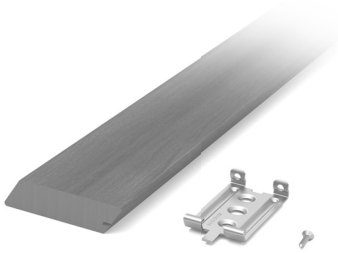
must be in the center of the rhombus profile.

Please note: Be aware that the rhombus profile has two different surfaces. Only one side has the characteristic medullary ray.

Mounting instruction

Rhombus profile

20.5 x 81 mm



Date: 10.12.2019 | EN



Pre-drill all holes. The screws for fastening of the rhombus profile need to be adapted according to the substructure. The frontal butt joint must be at least 8 mm.

